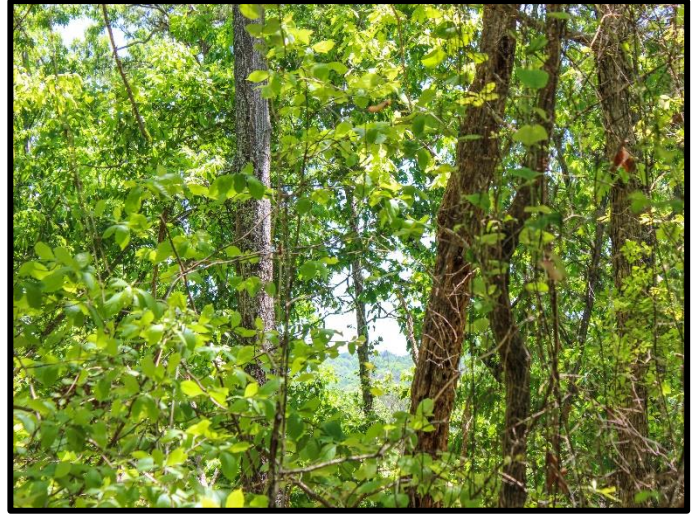


0 Timberlane Drive, Dahlonega, GA



Potential For Great Hilltop Views

PROPERTY INFORMATION SHEET

PRICE: **\$89,900** ACREAGE: **4.44 +/- acres** COUNTY: **Lumpkin** AREA OF COUNTY: **South**
DISTRICT: **12** SECTION: **1** LANDLOT: **13**
TERMS: **Cash** TOPOGRAPHY: **Flat, level, sloping** STREAMS ON PROPERTY:
None

DESCRIPTION: **BUILD YOUR HOME 5 MINS FROM DAHLONEGA! This 4.44 +/- acres is nestled at the end of the road in Timber Lane Subdivision just a 5-minute drive from the beautiful and happening City of Dahlonega. This lot features a fantastic building spot with the potential for some hilltop views facing back towards town. The acreage slopes downhill just far enough that a committed buyer could cut out a view of Yahoola Creek, which feeds into Lake Zwerner.**

SCHOOL-ELEM: **Lumpkin County** MIDDLE: **Lumpkin County** HIGH: **Lumpkin County**

SETTING/LAND: **Level and wooded building site with sloping to steep terrain towards the river.**

BUILDINGS ON PROPERTY: **None** RESTRICTIONS: **Yes** POWER/TELEPHONE: **At Property**

STREET/ACCESS: **Public maintained, paved** PLAT/SURVEY AVAILABLE: **Yes**

DIRECTIONS: **From Dahlonega: Take East Main Street to South Grove Street. Turn Left onto BUS 19/North Grove Street. Turn right onto Wimpy Mill Road for 1.2 miles. Turn left onto Timberlane Drive. Continue on Timberlane for 0.7 miles or until the end of the road.**

Steven Pamplin: 706-429-8368
www.vinsondoverrealty.com

**THE INFORMATION CONTAINED HEREIN IS DERIVED FROM SOURCES BELIEVED TO BE CORRECT, BUT IT IS NOT GUARANTEED.
Complete info at <http://www.vinsondoverrealty.com>