



DOVER REALTY

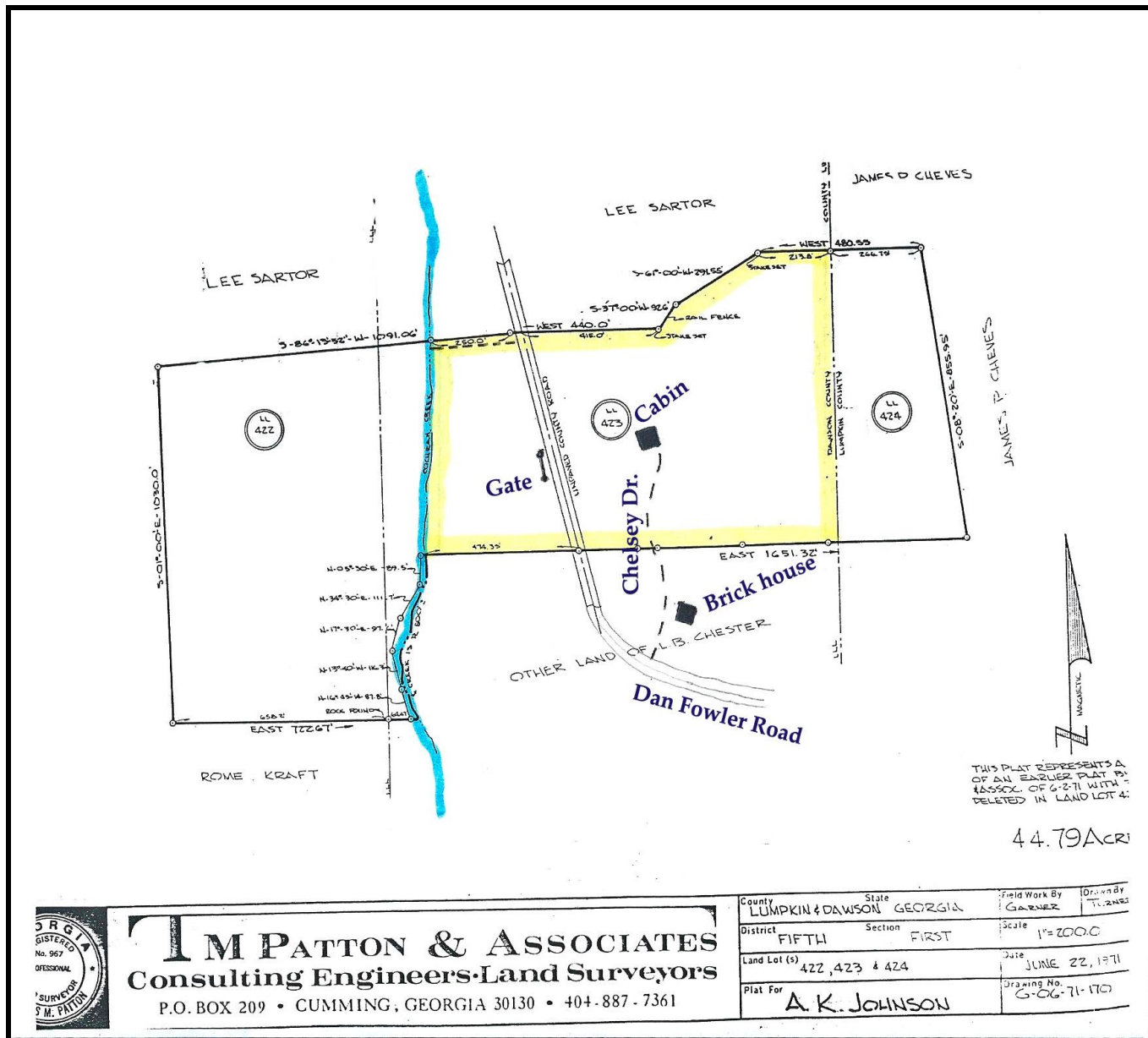
SALES & INVESTMENTS - SINCE 1961

PUBLIC SQUARE
12 PARK STREET NORTH
DAHLONEGA, GA 30533

706-864-2600

doverrealty@windstream.net
www.vinsondoverrealty.com

A Second Generation Family Business



T M PATTON & ASSOCIATES
Consulting Engineers-Land Surveyors
P.O. BOX 209 • CUMMING, GEORGIA 30130 • 404-887-7361

County	LUMPKIN & DAWSON	State	GEORGIA	Field Work By	GARNER	Drawn by	T. 2485
District	FIFTH	Section	FIRST	Scale	1"=200.0		
Land Lot (s)	422, 423 & 424			Date	JUNE 22, 1971		
Plat For	A. K. JOHNSON			Drawing No.	G-06-71-170		

Vic Dover: 706-265-5855
Melissa Dover: 706-344-8850
www.vinsondoverrealty.com

**THE INFORMATION CONTAINED HEREIN IS DERIVED FROM SOURCES BELIEVED TO BE CORRECT, BUT IT IS NOT GUARANTEED.
Complete info at <http://www.vinsondoverrealty.com>